

DISCLAIMER

THIS IS A PUBLIC DOCUMENT. Although the information on this drawing are presented in good faith and believed to be correct, **Pumpkin, Inc.** makes no representations or warranties as to the completeness or accuracy of the information contained herein. Information is supplied upon the condition that the persons receiving same will make their own determination as to its suitability for their purposes prior to use. In no event will **Pumpkin, Inc.** be responsible for damages of any nature whatsoever resulting from the use of or reliance upon information from this drawing or the products to which the information refers. The specifications of the products manufactured by Pumpkin, Inc. that are featured in this publication may be changed without notice.

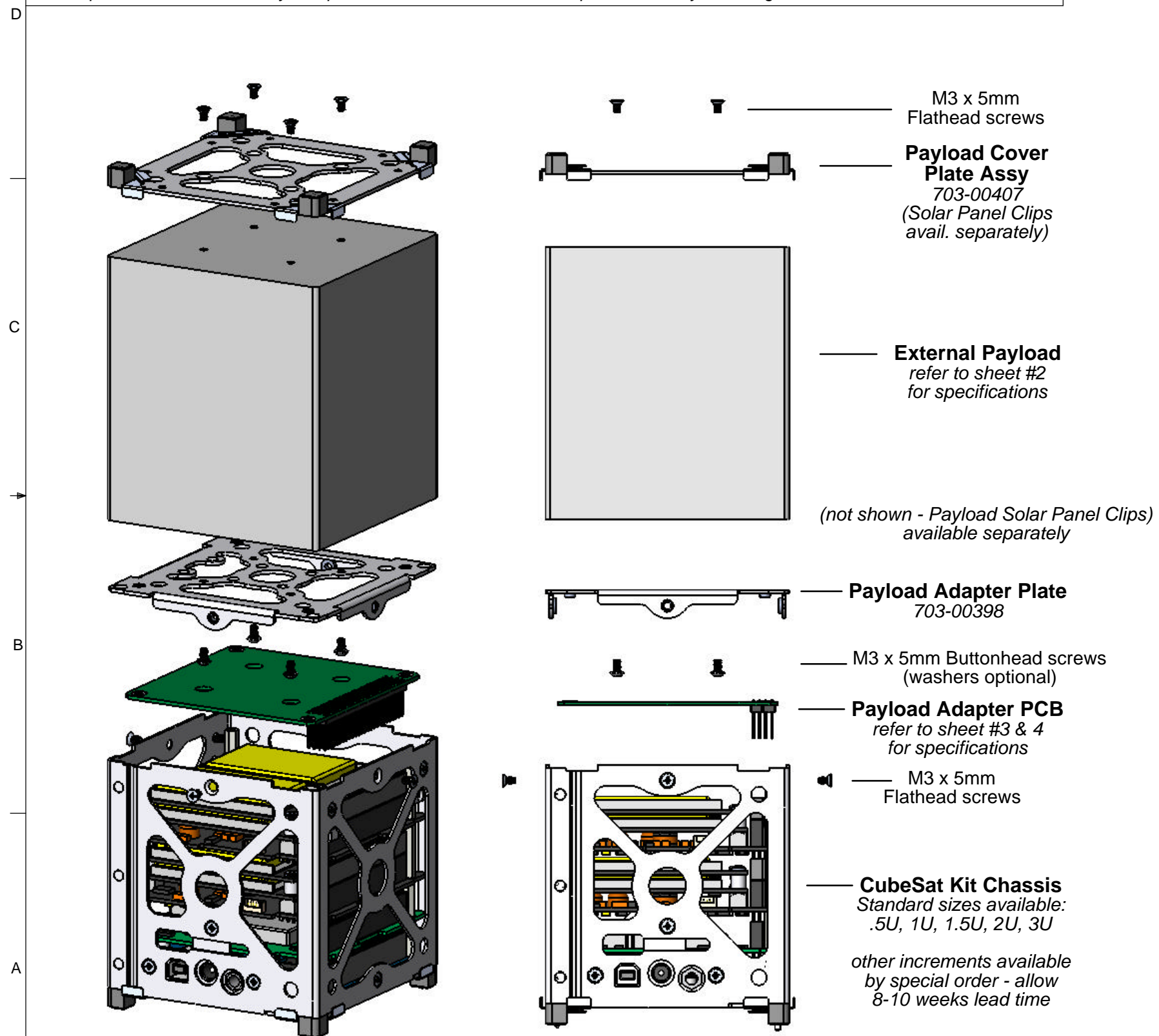
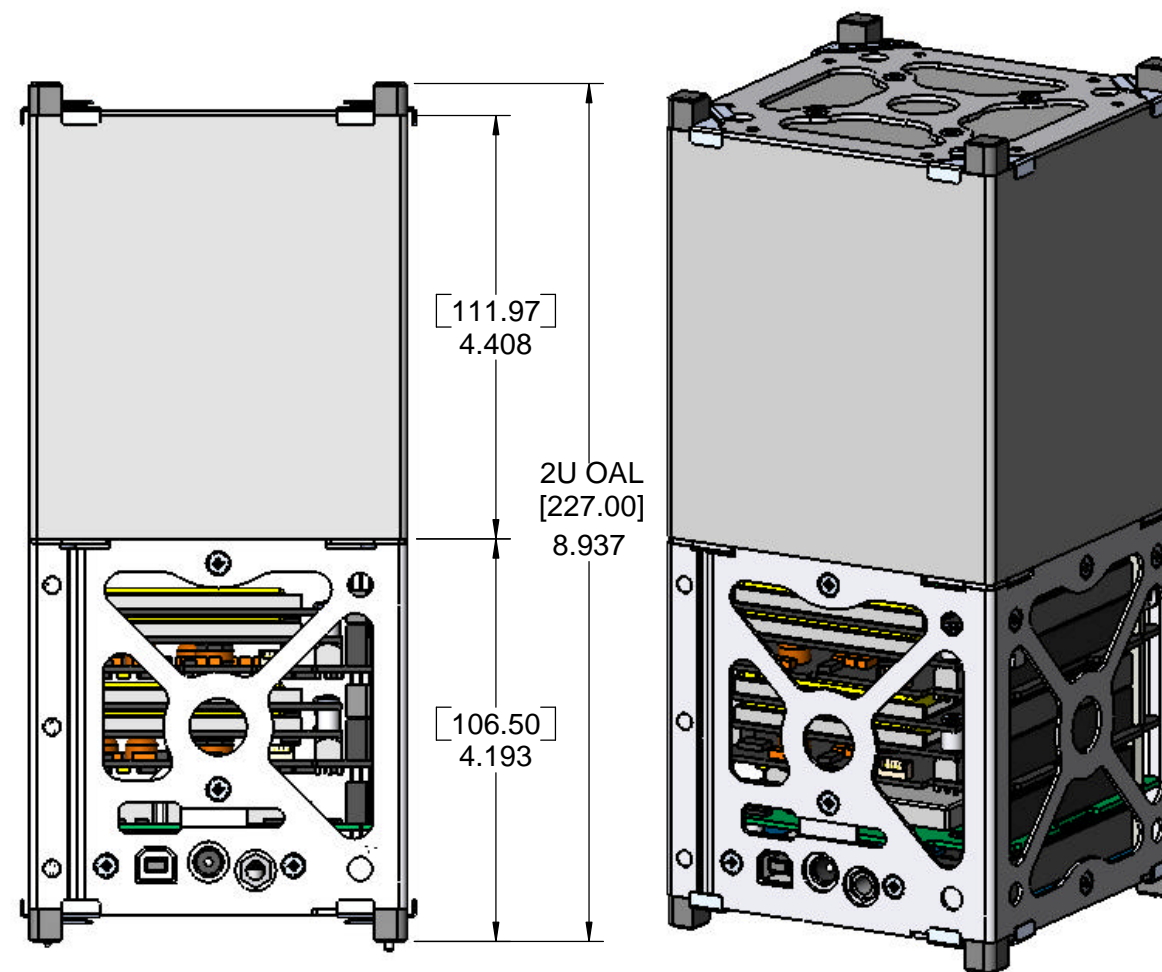
REVISION HISTORY

REV	LOC	DESCRIPTION	DATE	APP'VD

CSK EXTERNAL PAYLOAD DESIGN FEATURES: Customers can ...

- 1) Interface between the CSK Bus and customer payload
- 2) Satisfy CubeSat Design Specification (CDS) by using Payload Cover Plate Assy
- 3) Still utilize CSK Solar Panel Clips

2U OVERALL LENGTH / PAYLOAD EXAMPLE



NOTE: 1U CubeSat Kit assembly shown is filled with typical representative payload modules, for illustrative purposes.

CubeSat Kit Chassis
Standard sizes available:
.5U, 1U, 1.5U, 2U, 3U

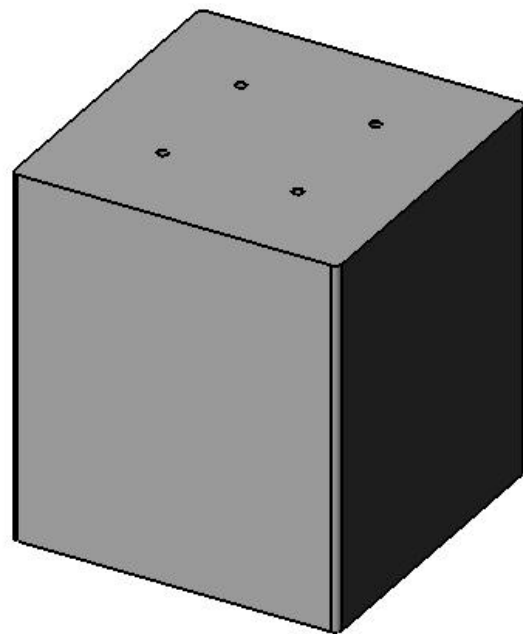
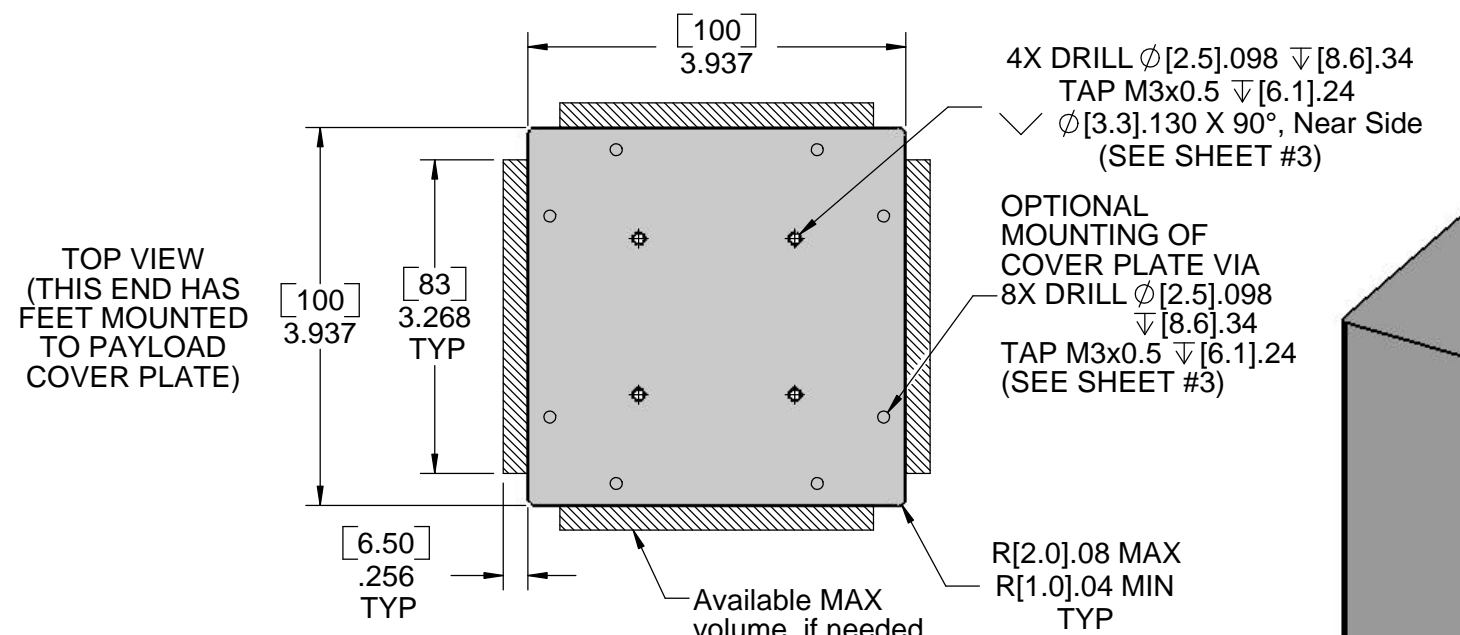
other increments available
by special order - allow
8-10 weeks lead time

MATERIAL: SEE NOTES	FINISH: SEE NOTES	HEAT TREAT: NONE	WEIGHT:
		750 Naples - San Francisco - CA 94112 (415) 584-6360 ph - (415) 585-7948 fax info@pumpkininc.com	
		<p>PAYLOAD OVERVIEW & SPECIFICATIONS</p>	
DIMENSIONS ARE SHOWN IN [MILLIMETERS] and INCHES TOLERANCES ARE: (in Inches) FRACTIONS DECIMALS ANGLES .X = ± .030 .XX = ± .010 ± 0° 30" .XXX = ± .005		APPROVALS DRAWN AWR CHECKED QUAL ENG	DATE 10/17/08
CAD GENERATED DRAWING, DO NOT MANUALLY UPDATE		DO NOT SCALE DRAWING	
TITLE PAYLOAD OVERVIEW & SPECIFICATIONS		SIZE B DWG. 703-00XXX	REV A2 SHEET 1 OF 5
SCALE 1:2		SHEET 1 OF 5	

DISCLAIMER

THIS IS A PUBLIC DOCUMENT. Although the information on this drawing are presented in good faith and believed to be correct, **Pumpkin, Inc.** makes no representations or warranties as to the completeness or accuracy of the information contained herein. Information is supplied upon the condition that the persons receiving same will make their own determination as to its suitability for their purposes prior to use. In no event will **Pumpkin, Inc.** be responsible for damages of any nature whatsoever resulting from the use of or reliance upon information from this drawing or the products to which the information refers. The specifications of the products manufactured by Pumpkin, Inc. that are featured in this publication may be changed without notice.

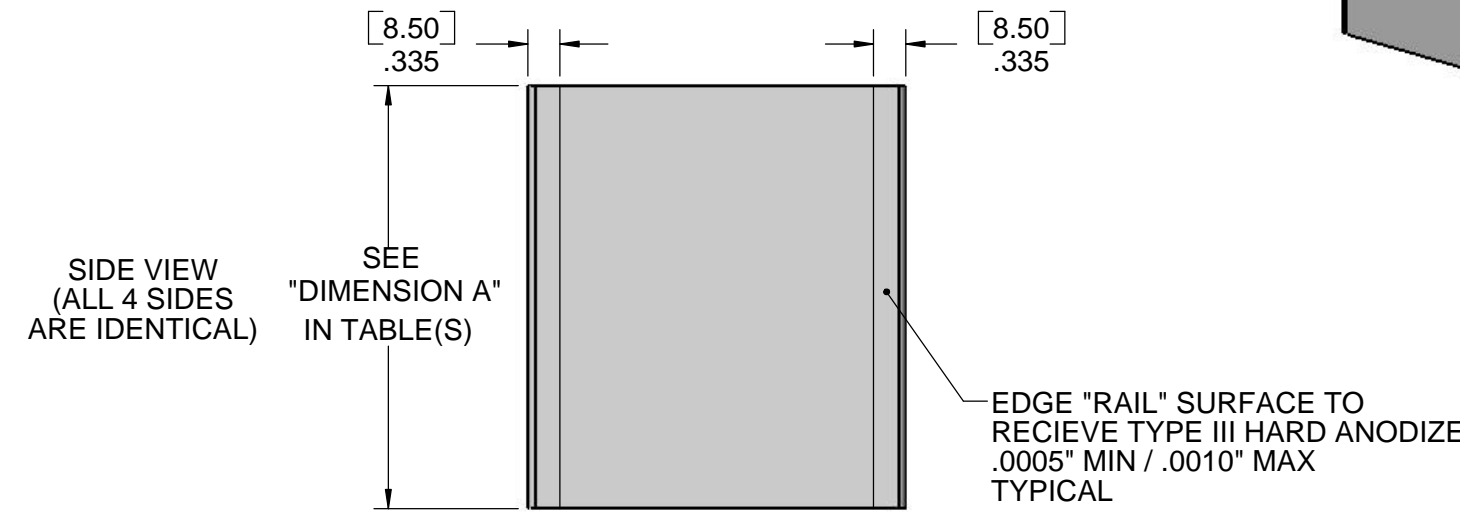
REVISION HISTORY				
REV	LOC	DESCRIPTION	DATE	APP'VD
A1	C6/C7	MOVED MOUNTING DIMS TO SHEET #3	10/17/2008	AWR
A2	C6	CHANGED OPTIONAL MOUNT SPEC FROM M4 to M3 HARDWARE	10/22/2008	AWR
A2	A7	ADDED BOTTOM VIEW	10/22/2008	AWR



"with ADACS" and External Payload TABLE (INTEGRATED WITH CSK CHASSIS SIZE)

	.5U	1U	1.5U
3U	[203.45] 8.010	[146.73] 5.777	[89.98] 3.543
2U	[89.98] 3.543		

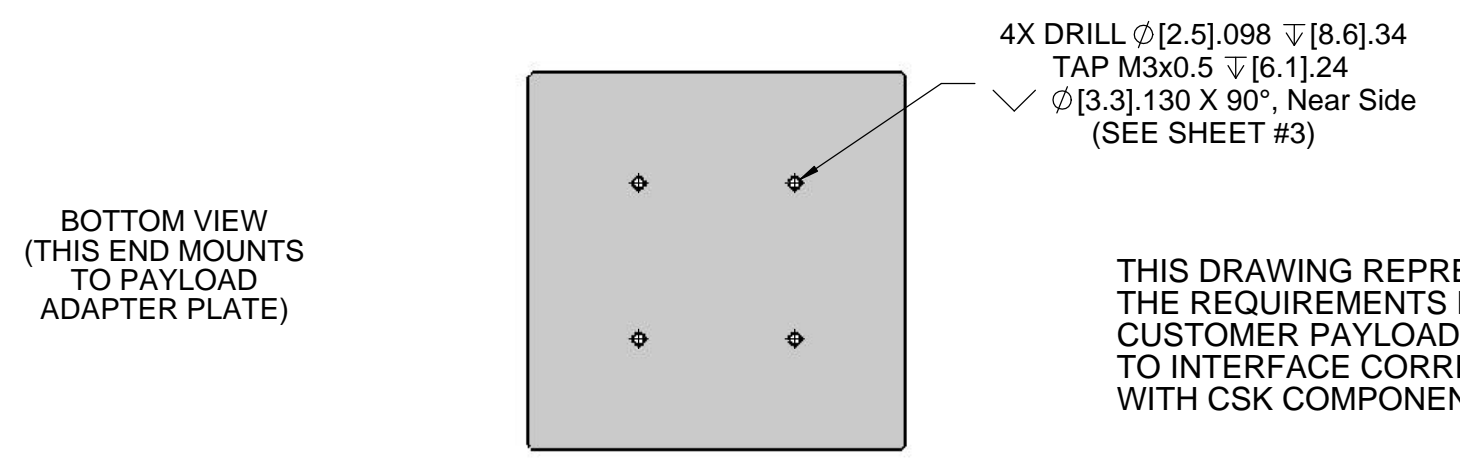
PAYLOAD "DIMENSION A"



External Payload TABLE (INTEGRATED WITH CSK CHASSIS SIZE)

	.5U	1U	1.5U	2U
3U	[282.22mm] 11.111	[225.47mm] 8.877	[168.72mm] 6.406	[111.97mm] 4.408
2U	[168.72mm] 6.406	[111.97mm] 4.408	[55.22mm] 2.174	
1.5U	[111.97mm] 4.408	[55.22mm] 2.174		
1U	[55.22mm] 2.174			

PAYLOAD "DIMENSION A"



THIS DRAWING REPRESENTS THE REQUIREMENTS FOR THE CUSTOMER PAYLOAD, IN ORDER TO INTERFACE CORRECTLY WITH CSK COMPONENTS.

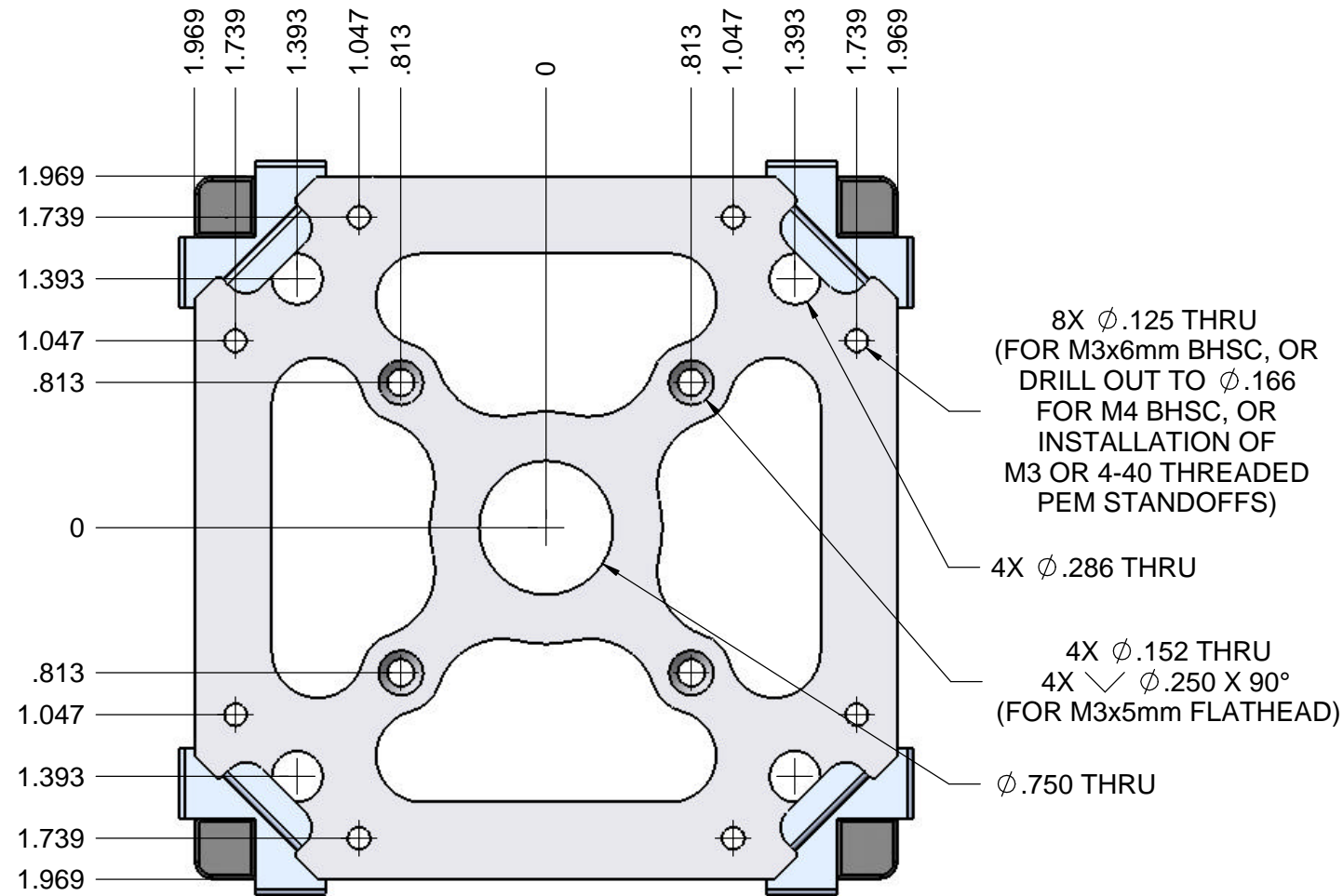
MATERIAL: SEE NOTES	FINISH: SEE NOTES	HEAT TREAT: NONE	WEIGHT:
		750 Naples - San Francisco - CA 94112 (415) 584-6360 ph - (415) 585-7948 fax info@pumpkininc.com	
		EXTERNAL PAYLOAD SPECIFICATION	
DIMENSIONS ARE SHOWN IN [MILLIMETERS] and INCHES TOLERANCES ARE: (in Inches) FRACTIONS DECIMALS ANGLES .X = ± .030 .XX = ± .010 ± 0° 30" .XXX = ± .005		APPROVALS DRAWN AWR CHECKED QUAL ENG	DATE 10/17/08
CAD GENERATED DRAWING, DO NOT MANUALLY UPDATE		DO NOT SCALE DRAWING	
SCALE 1:2		SIZE B DWG. 703-00XXX	REV A2 SHEET 2 OF 5

DISCLAIMER

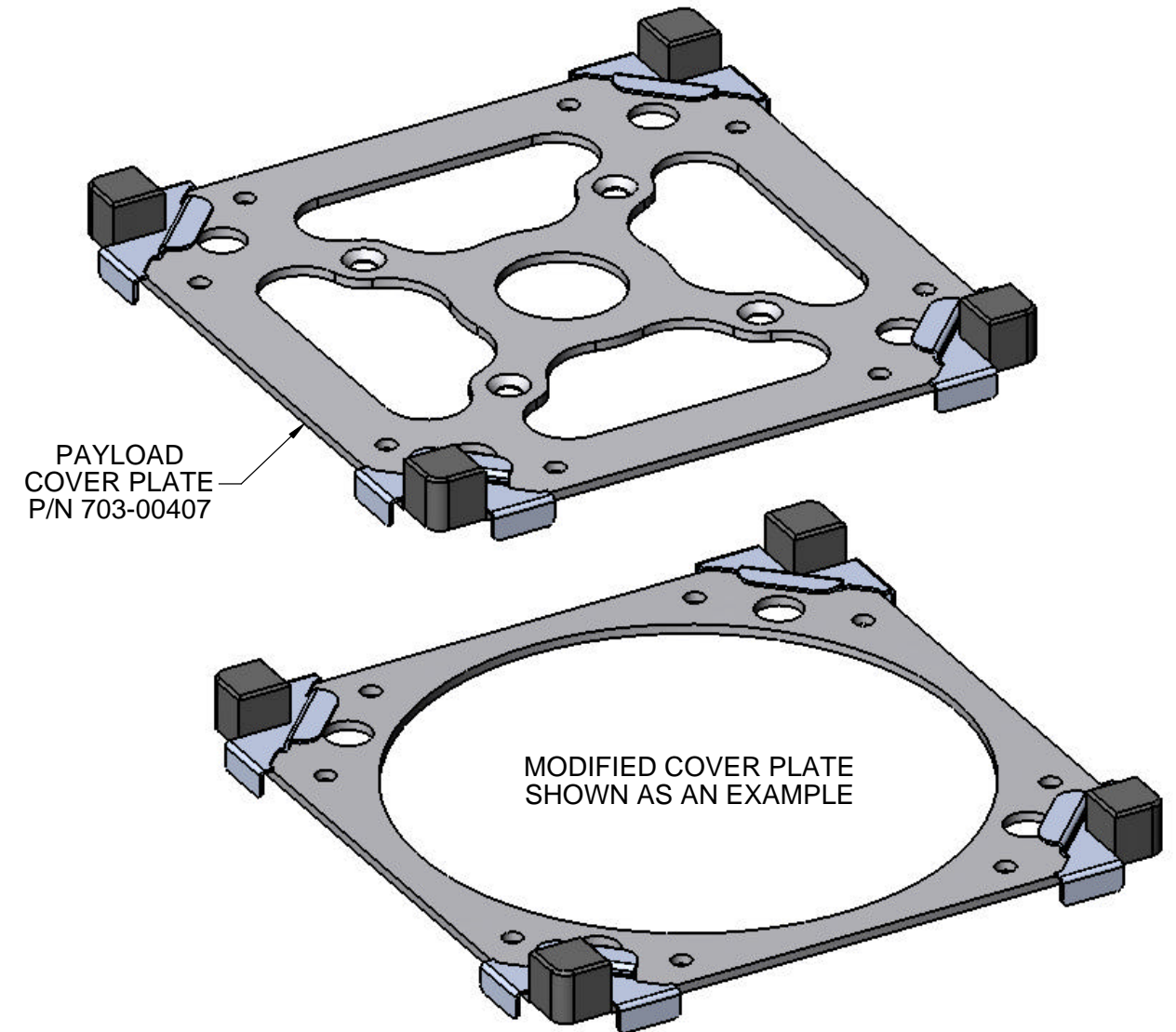
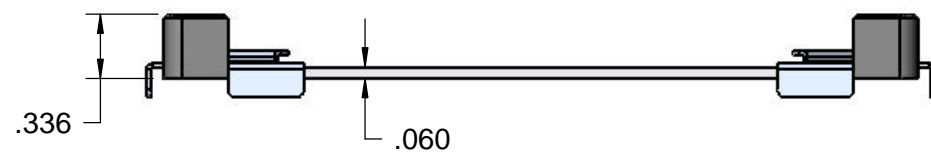
THIS IS A PUBLIC DOCUMENT. Although the information on this drawing are presented in good faith and believed to be correct, **Pumpkin, Inc.** makes no representations or warranties as to the completeness or accuracy of the information contained herein. Information is supplied upon the condition that the persons receiving same will make their own determination as to its suitability for their purposes prior to use. In no event will **Pumpkin, Inc.** be responsible for damages of any nature whatsoever resulting from the use of or reliance upon information from this drawing or the products to which the information refers. The specifications of the products manufactured by Pumpkin, Inc. that are featured in this publication may be changed without notice.

REVISION HISTORY

REV	LOC	DESCRIPTION	DATE	APP'VD
A1		NEW SHEET ADDED	10/17/2008	AWR
A2	C5	CHANGED MOUNTING HOLE CALLOUT	10/22/2008	AWR



PAYLOAD COVER PLATE
P/N 703-00407
REFERENCE SKETCH



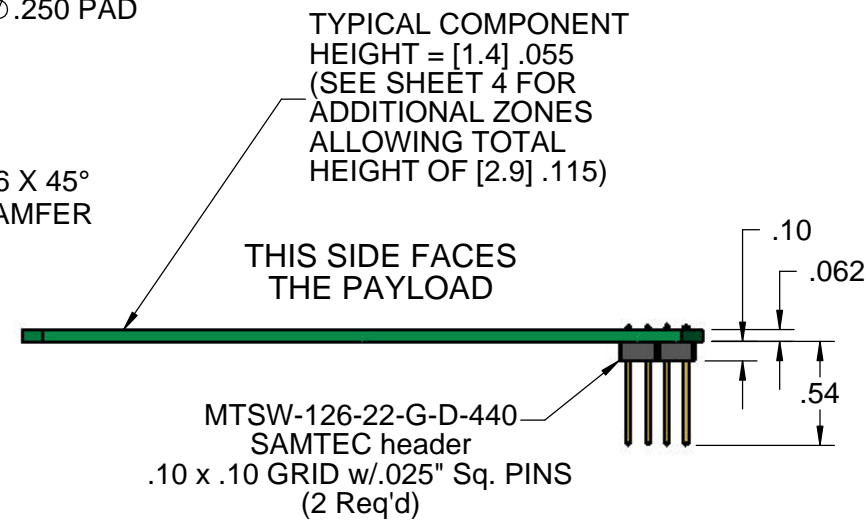
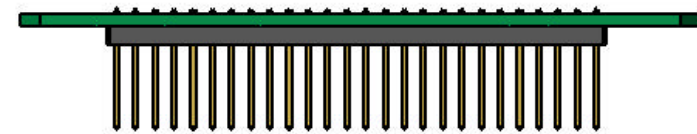
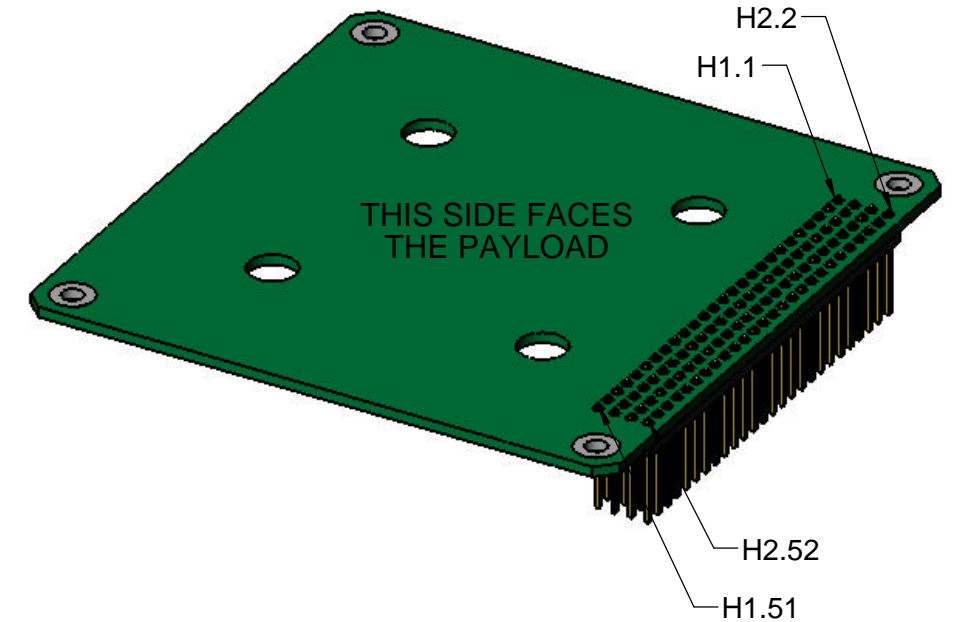
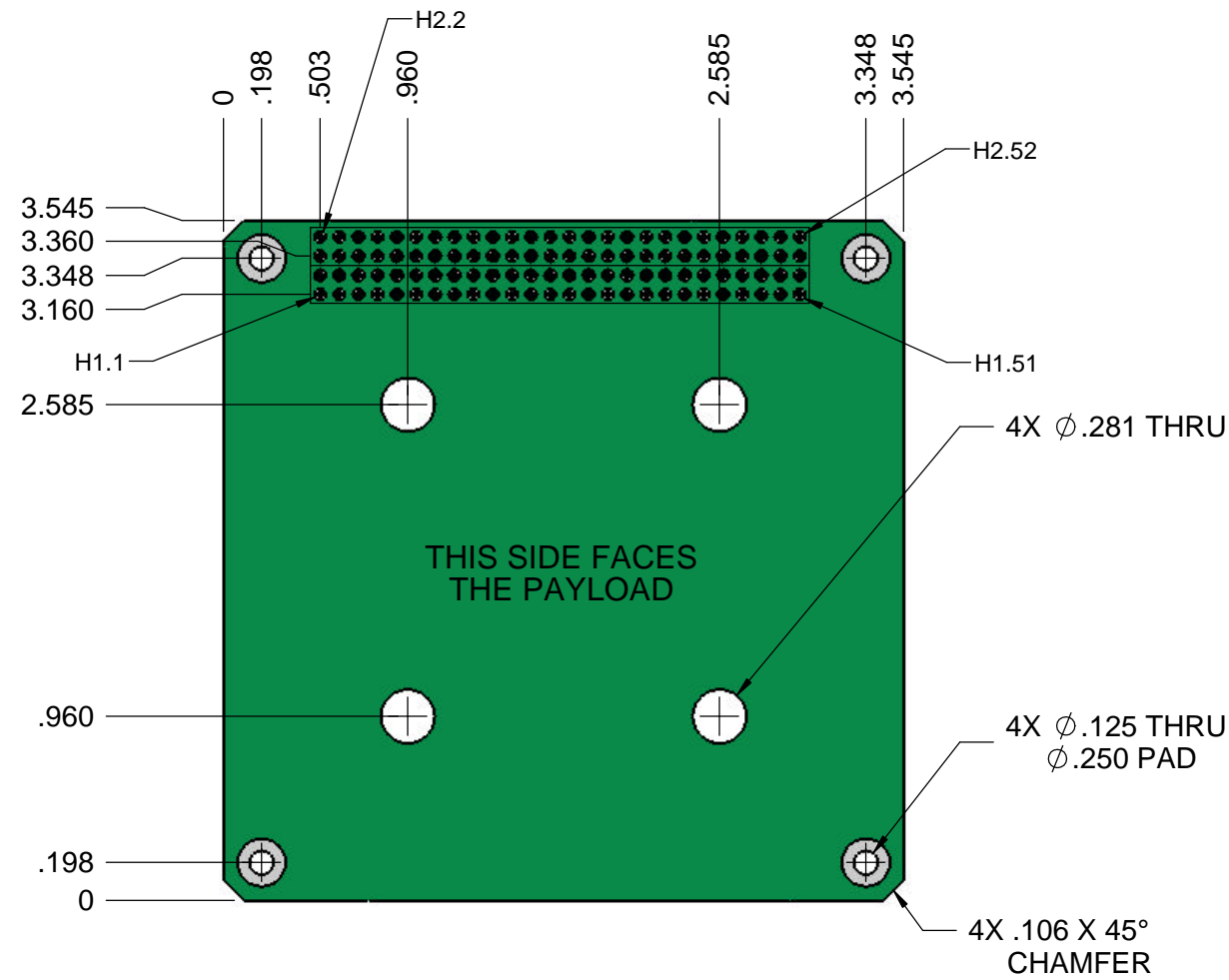
MATERIAL: SEE NOTES		FINISH: SEE NOTES		HEAT TREAT: NONE		WEIGHT:	
				750 Naples - San Francisco - CA 94112 (415) 584-6360 ph - (415) 585-7948 fax info@pumpkininc.com			
				DIMENSIONS ARE SHOWN IN [MILLIMETERS] and INCHES TOLERANCES ARE: (in Inches) FRACTIONS DECIMALS ANGLES .X = \pm .030 .XX = \pm .010 \pm 0° 30" .XXX = \pm .005		APPROVALS DRAWN AWR CHECKED QUAL ENG	
CAD GENERATED DRAWING, DO NOT MANUALLY UPDATE		DO NOT SCALE DRAWING		TITLE PAYLOAD COVER PLATE, INTERFACE SPECIFICATION		SIZE DWG. REV B 703-00XXX A2	
SCALE 1:1				SHEET 3 OF 5			

DISCLAIMER

THIS IS A PUBLIC DOCUMENT. Although the information on this drawing are presented in good faith and believed to be correct, **Pumpkin, Inc.** makes no representations or warranties as to the completeness or accuracy of the information contained herein. Information is supplied upon the condition that the persons receiving same will make their own determination as to its suitability for their purposes prior to use. In no event will **Pumpkin, Inc.** be responsible for damages of any nature whatsoever resulting from the use of or reliance upon information from this drawing or the products to which the information refers. The specifications of the products manufactured by Pumpkin, Inc. that are featured in this publication may be changed without notice.

REVISION HISTORY

REV	LOC	DESCRIPTION	DATE	APP'VD

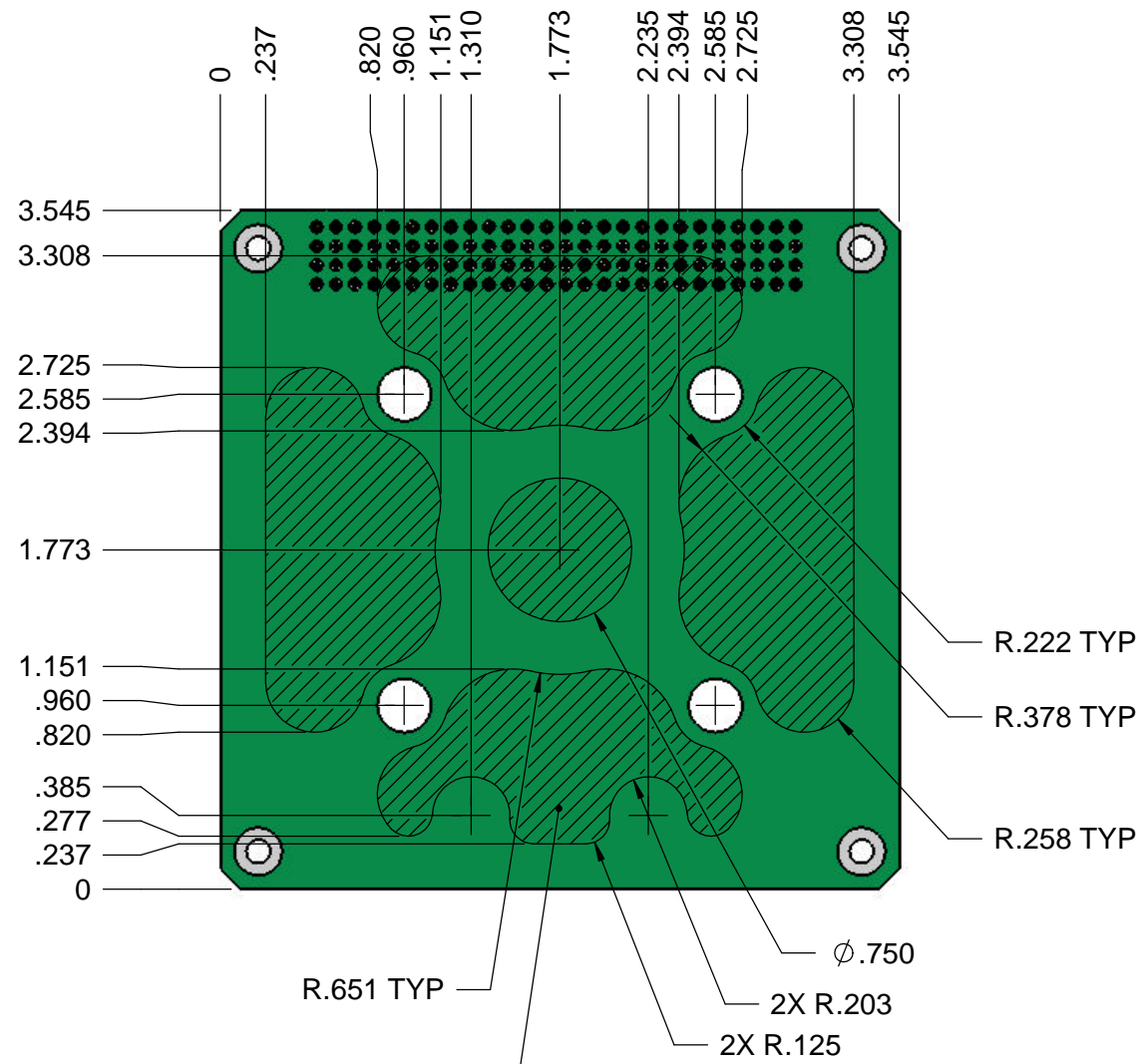


MATERIAL: SEE NOTES	FINISH: SEE NOTES	HEAT TREAT: NONE	WEIGHT:
		750 Naples - San Francisco - CA 94112 (415) 584-6360 ph - (415) 585-7948 fax info@pumpkininc.com	
		DIMENSIONS ARE SHOWN IN INCHES TOLERANCES ARE: FRACTIONS DECIMALS ANGLES .X = ± .030 .XX = ± .010 ± 0° 30" .XXX = ± .005	
APPROVALS DRAWN AWR CHECKED QUAL ENG		DATE 10/17/08	TITLE PAYLOAD ADAPTER PCB SPECIFICATION
CAD GENERATED DRAWING, DO NOT MANUALLY UPDATE		DO NOT SCALE DRAWING	SIZE B DWG. 703-00XXX REV A2 SCALE 1:2 SHEET 4 OF 5

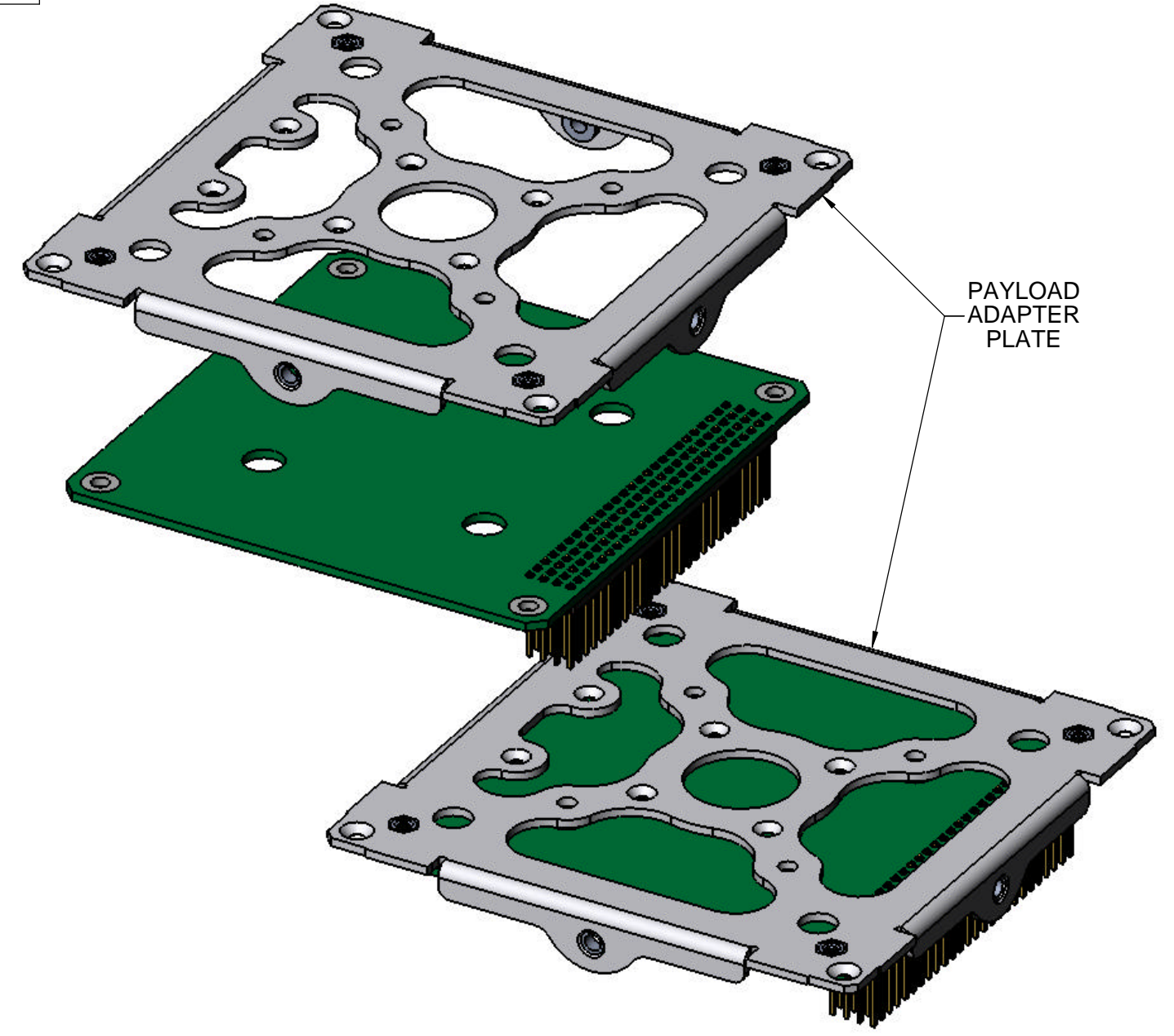
DISCLAIMER

THIS IS A PUBLIC DOCUMENT. Although the information on this drawing are presented in good faith and believed to be correct, **Pumpkin, Inc.** makes no representations or warranties as to the completeness or accuracy of the information contained herein. Information is supplied upon the condition that the persons receiving same will make their own determination as to its suitability for their purposes prior to use. In no event will **Pumpkin, Inc.** be responsible for damages of any nature whatsoever resulting from the use of or reliance upon information from this drawing or the products to which the information refers. The specifications of the products manufactured by Pumpkin, Inc. that are featured in this publication may be changed without notice.

REVISION HISTORY				
REV	LOC	DESCRIPTION	DATE	APP'VD



NOTE: SHADED ZONES, ALLOW FOR ADDITIONAL .06" OF COMPONENT HEIGHT.



MATERIAL: SEE NOTES	FINISH: SEE NOTES	HEAT TREAT: NONE	WEIGHT:
		750 Naples - San Francisco - CA 94112 (415) 584-6360 ph - (415) 585-7948 fax info@pumpkininc.com	
UNLESS OTHERWISE SPECIFIED DIMENSIONS ARE IN INCHES TOLERANCES ARE: FRACTIONS DECIMALS ANGLES .X = ± .030 .XX = ± .010 ± 0° 30" .XXX = ± .005		APPROVALS DRAWN AWR CHECKED QUAL ENG	DATE 10/17/08
CAD GENERATED DRAWING, DO NOT MANUALLY UPDATE		DO NOT SCALE DRAWING	TITLE PAYLOAD ADAPTER PCB SPECIFICATION SIZE B DWG. 703-00XXX REV A2 SCALE 1:1 SHEET 5 OF 5